

TABLET ENCLOSURE



DESIGN FEATURES

- Molded in high impact ABS, which is flame retardant to both UL94-V0 and UL94-HB
- Available in white (RAL9002, UL94-V0 of ABS) or black (RAL9005, UL94-HB of ABS)
- Ideal for portable, desktop or wall-mounted electronic applications
- The recessed area is designed for use with a 4.3", 5.7", 7.0", 8.4" or 10.4" LCD module or touch screen.
- Tongue and groove sealing design on the lid and base makes it water- and dust-proof with a IP65 rating.
- Recommended working temperature -20° to 80°C
- Add-on rubber feet are included.
- Silicone gasket is included but not installed
- Contact the factory for modifications

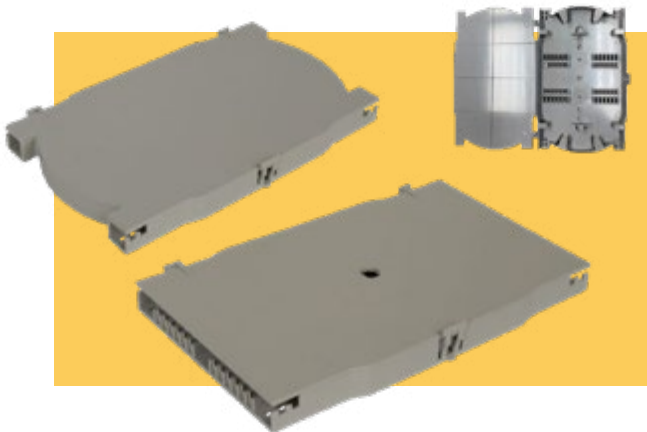
Note: Units with suffix "-B" are black and are made of UL94-HB ABS plastic. Units with suffix "-W" are white and are made of UL94-V0 ABS plastic.

Model No.	Model No.	L (in)	W (in)	H (in)	L (mm)	W (mm)	H (mm)	Weight lb.
TB-32610-B	TB-32610-W	5.51	3.94	1.18	140	100	30	0.3
TB-32611-B	TB-32611-W	7.48	5.91	1.18	190	150	30	0.5
TB-32612-B	TB-32612-W	8.70	6.34	1.18	221	161	30	0.7
TB-32613-B	TB-32613-W	10.98	8.11	1.18	279	206	30	1.1
TB-32614-B	TB-32614-W	12.68	9.13	1.18	322	232	30	1.4



FIBER OPTIC BOXES

CCP FIBER OPTIC SPLICE TRAYS



The CCP Series of fiber-optic splice trays protects and manages cables effectively. Made of high quality polycarbonate and ABS plastic, it is designed for 12-core drop splicing and coiling, for SC and LC duplex adapter and pigtail. It is easy to use. For indoor applications.

Model No.	External Dimensions
CCP-11708	6.30" × 3.94" × 0.55"
CCP-11710	6.30" × 3.94" × 0.55"